

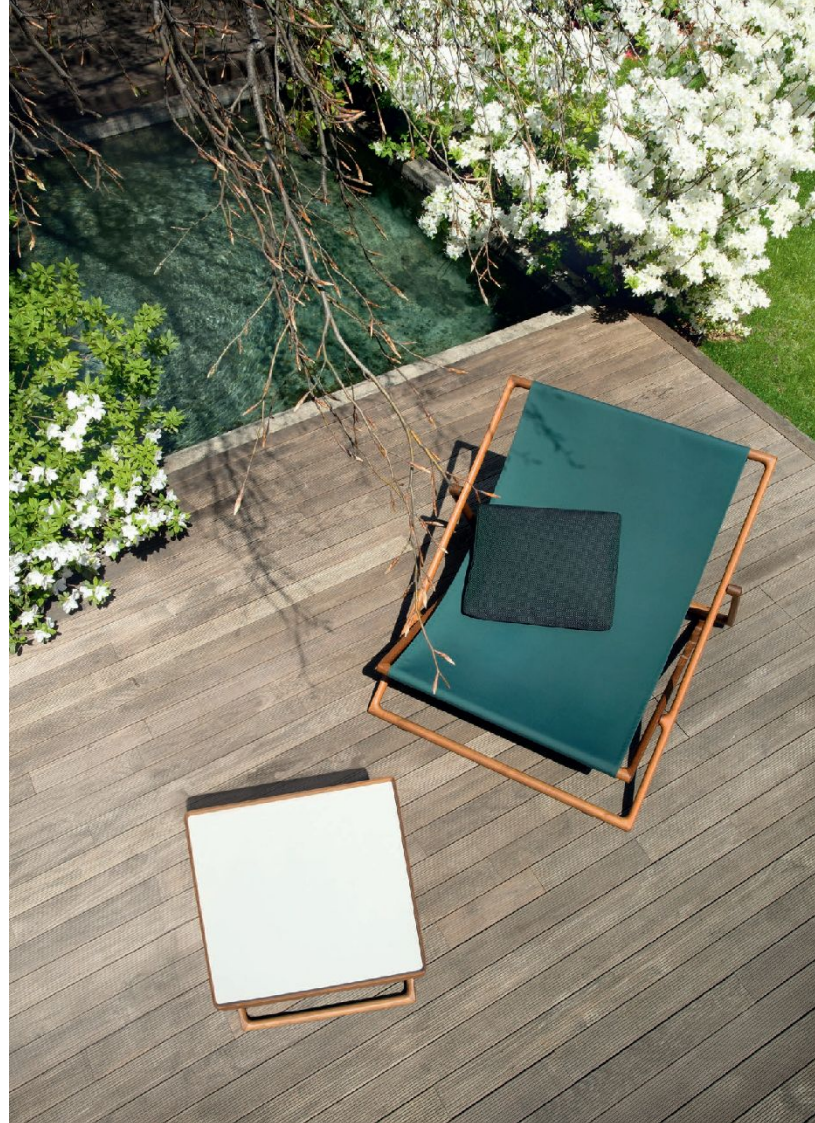


THE
MODERN
GARDEN COMPANY

PORTOFINO

Made with the finest materials, traditional techniques and a meticulous attention to detail, Portofino is an elegant collection of outdoor furniture designed by Vincent Van Duysen for Paola Lenti in 2014.

Featuring the iconic director-style dining chair and the ultimate deck chair, the Portofino collection is enhanced by large, elegant dining tables and a bistro table with stone or ceramic tiled tops. Most recently, the collection has been extended to include a sofa and lounge chair, all bringing pure sophistication to gardens, terraces, yachts and beaches around the world.



DINING CHAIR



Director's chair
59(w) x 52(d) x 79(h)

A design classic, this iconic director-style dining chair brings pure sophistication to every outdoor space with its slim locust wood frame, slung with solid Madras or Tamil fabrics. Traditional tenon and mortar joints absorb weight and movement, making it durable, too.



LOUNGE CHAIR



armchair
65.5(w) × 59(d) × 71(h)

For classic style and comfort, this is a more generously proportioned version of the director's chair. Add a contrasting seat and back cushion for the finest relaxation and comfort.



DECKCHAIR + STOOL



deckchair

82.59(w) x 104(d) x 80.5(h)

The ultimate deck chair combines simplicity and elegance with its slim timber structure and luxurious fabrics. Available in two widths, a seat pad with a headrest is also available.

There's also the folding stool that neatly doubles up as a side table when placing the fitted Portofino tray on top. The tray comes with natural locust wood border and white varnished aluminium top, or a Wenge dyed locust wood border and grey varnished aluminium top.

DINING & BISTRO TABLES



These large, elegant dining tables are available in two sizes, the structure is made of locust heartwood with an acrylic finish, available in natural or wengé. The top matches the colour of the structure, in either Pietra di Camiso natural stone or lava stone. There's also a bistro table.



table

205(w) × 100(d) × 75(h)

280(w) × 100(d) × 75(h)

280(w) × 104(d) × 73,5(h)

104(w) × 104(d) × 73,5(h)



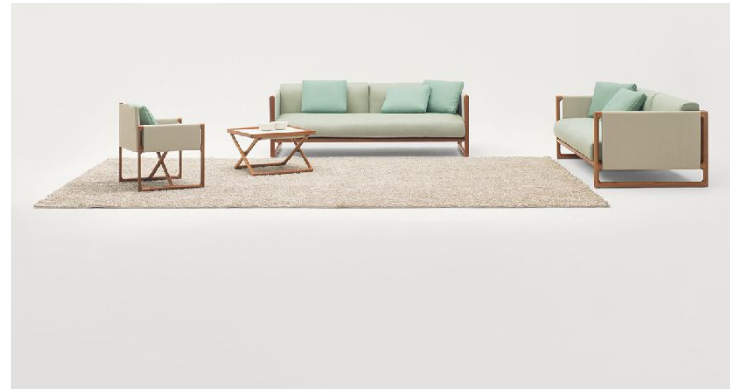
SOFA



sofa

207(w) x 104(d) x 44/71(h)

A beautiful sofa, the structure is made of locust heartwood, the seat and sling follow the relaxed design intentions of the director's chair. Deep and generously proportioned, the seat and back cushions make this sofa quite simply luxurious.









COMPLEMENTS

The relaxed design of Portofino and combination of rich coloured fabrics allow this collection to be paired with ease. Turn the page for some collections that work beautifully with

Portofino:





Sciara – side tables with hand cut lava stone tiles decorated with melted glass, each piece unique. Available in different dimensions, the powder-varnished stainless steel structure is available in avorio or grigio scuro colours.



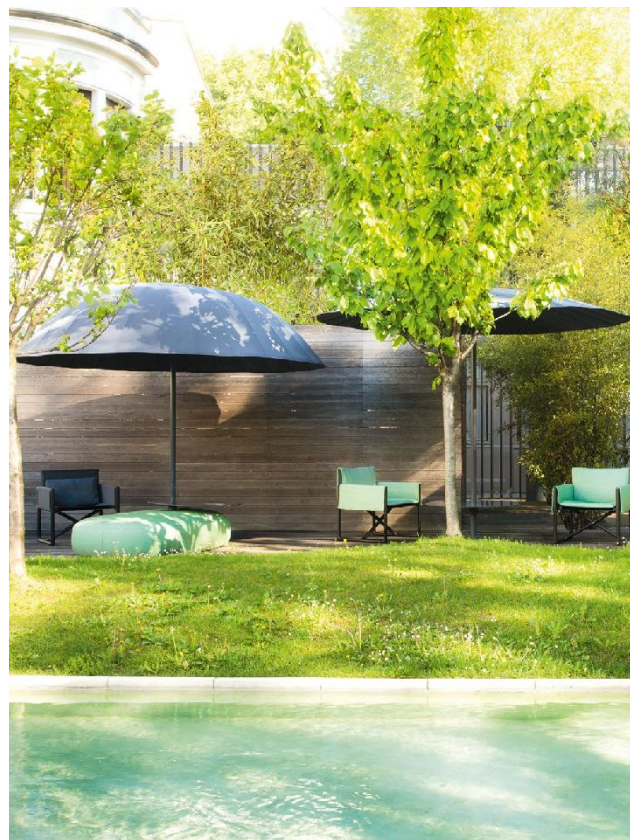


Calatini – A series of five side tables hand decorated by Nicolò Morales. The material and the handwork technique leads to colour and design differences between tables, but it is the irregularity and the uniqueness of each item that are sought after.





Bistro – a flat or dome-shaped parasol made with the Madras and Tamil outdoor fabrics. It can be tilted to the desired position, while the aluminium frame is varnished in the full range of outdoor colours in the collection.

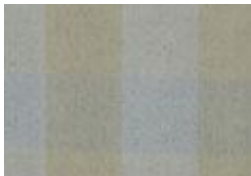


MATERIALS

The structure of the Portofino series is crafted from black locust heartwood, a highly prized timber renowned for its strength and resistance to rot. The natural reddish colour of the frame and distinctive rings are enhanced by an acrylic wax finish. Alternatively the frames are available with dark stained finish.



The removable upholstery of the Portofino is available in Madras or Tamil fabric. The sofa and lounge chair are also available in Brio and Thea fabrics. Loose cushions are in Brio, Rope T or Thea fabrics.



Madras (25 shades)



Tamil (48 shades)



Brio (290 shades)



Rope T (27 shades)



Thea (4 shades)

PORTOFINO

The Portofino series was awarded the GOOD DESIGN AWARD in 2016.



The Modern Garden Company

Millars 3, Southmill Road, Bishops Stortford, Herts. CM23 3DH Tel: 01279 653 200 info@modernngarden.co.uk

